



# Unit 1 - Dysphagia

This project has been funded with support from the European Commission. This publication reflects the views only of the author, and the Commission cannot be held responsible for any use which may be made of the information contained therein.

INDEED: "Innovative tools for diets oriented to education and health improvement in dysphagia condition"  
Project N:2020-1-ES01-KA204-083288



Co-funded by the  
Erasmus+ Programme  
of the European Union

## Goals of the module

The aim of this module is to learn about swallowing and dysphagia: definition, phases, classifications, health consequences , detection and diagnosis.

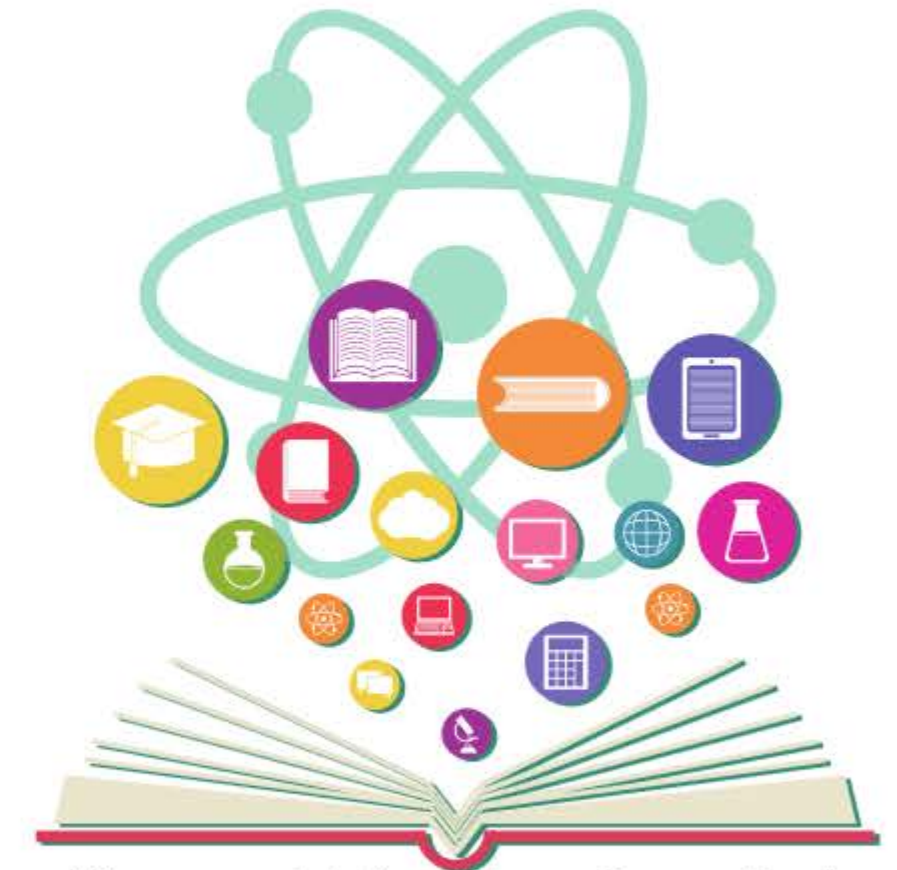


(Source: obtained from Canva Pro)



# Learning outcomes

- To understand the meaning of swallowing and dysphagia.
- To recognize the health consequences of dysphagia.
- To apply the alert protocol in Dysphagia.



(Source: obtained from Canva Pro)

# Structure to consider

---

Slide 6: Swallowing

---

Slide 11: Dysphagia

---

Slide 21: Health consequences

---

Slide 29: Detection and diagnosis

---

Slide 40: Questions

---

Slide 41: Review

---

Slide 42: Feedback



## Ice breaker

***Do you think someone  
in your environment  
may have dysphagia?***



(Source: obtained from Canva Pro)

# Swallowing

## Definition

**Swallowing; the function of passing and clearing substances (food, drink or saliva) from the oral cavity, pharynx and esophagus to the stomach at the appropriate rate and speed according to WHO. .**

**The process of swallowing is an essential part of the digestive process.**



# Swallowing phases

Swallowing is divided into three stages:

## ■ Oral phase

Voluntary movements. Introduction of food into the mouth and creation the food bolus and pushing the bolus with tongue elevation (1).

## ■ Pharyngeal phase

The bolus crosses the Pharynx and reaches the esophagus (2 and 3)

## ■ Esophageal phase

involuntary movements. The bolus crosses the esophagus and into the stomach (4).

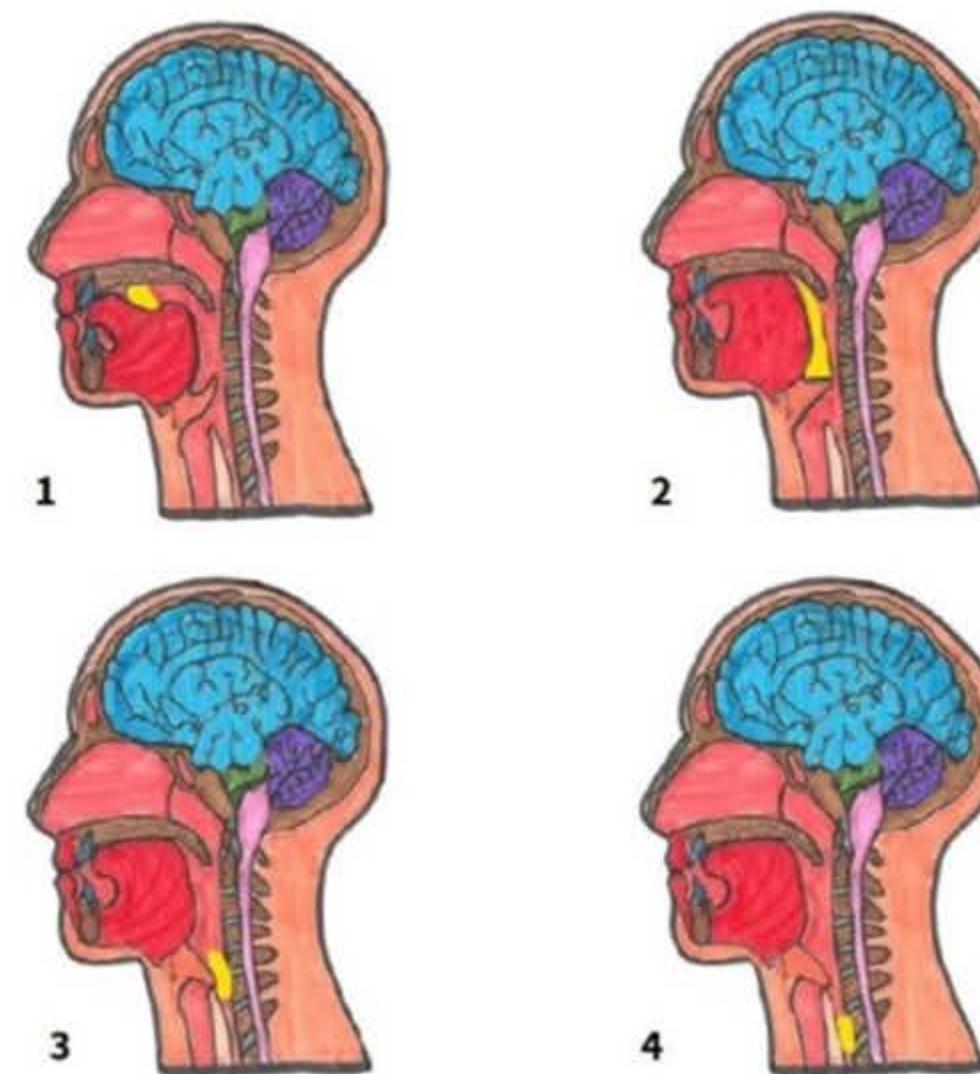



Figure 1. Swallowing mechanism  
(Source: CADIS Huesca)



# Infographic of swallowing

Infographics available for download on the training platform  
(<https://indeed-project.org/>) .


Innovative tools for Diets oriented to Education and hEalth improvement in Dysphagia condition

Co-funded by the Erasmus+ Programme of the European Union

## SWALLOWING

Swallowing; the function of passing and clearing substances (food, drink or saliva) from the oral cavity, pharynx and esophagus to the stomach at the appropriate rate and speed according to WHO.

The process of swallowing is an essential part of the digestive process.

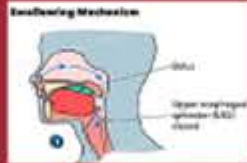
### SWALLOWING PHASES

**Phase 1: Oral phase**  
Voluntary movements. Introduction of food into the mouth and creation the food bolus and pushing the bolus with tongue elevation.


**Phase 2: Pharyngeal phase**  
Involuntary movements. The bolus crosses the Pharynx and reaches the esophagus.

**Phase 3: Esophageal phase**  
Involuntary movements. The bolus crosses the esophagus and into the stomach.


**PHASE 1**



**PHASE 2**



**PHASE 3**



### CONCLUSION

Swallowing is a complex process and it is compound by three phases: oral phase, pharyngeal phase and esophageal phase.

For more information:  
<https://indeed-project.org/>

Partners:



**Figure 2. Infographic of swallowing (Source: designed by Canva Pro)**



## Practical exercise to apply the theory

In this exercise we will be aware of the swallowing process.

**Materials:** a fruit ready to eat

**Steps** to follow while being aware of the process:

- 1. Take the fruit and introduce it in the mouth.** Observe how the mouth opens and the teeth help to cut the food into a small part that will remain inside the mouth.
- 2. Chew the food and form the food bolus.** In this phase notice how the food is chewed and with the help of the tongue it is thrown from one side of the mouth to the other and unites with the saliva.

## Practical exercise to apply the theory

- 3. Group all the food in the mouth at the base of the tongue.** Notice the movements of the mouth and how the tongue helps you to group them.
- 4. Swallow the food bolus.** Observe how there is a rapid movement of the tongue that pushes the food into the throat.
- 5. Finally, the last two phases of swallowing happen very quickly.** Observe how the food passes through the duct that communicates the mouth with the stomach.



# Dysphagia

## Overview

Occasional difficulty swallowing, which may occur when you eat too fast or don't chew your food well enough, usually isn't cause for concern. However, If these complications are frequent, they may indicate a serious health problem that requires treatment. Many of these medical complications can be to dysphagia.

About 8% of the world's adult population has dysphagia. In certain cases, this percentage is even higher;

- 20-60% in people over the age of 55.
- 35-84% in neurological disease (Parkinson (35-50%), Alzheimer (84%), ELA (60%) ...).
- 20-80% other medical situations (impact, surgery or cancer).





# Definition of Dysphagia

**Dysphagia** is the difficulty or sensation of having difficulty swallowing certain foods, liquids, medicines or saliva.

Difficulties can occur in any of the three phases of swallowing.  
It can be classified according to the location of them.



(Source: obtained from Canva Pro)



## Videos



[Go video: Dysphagia videofluoroscopy](#)

*(Ilanessa Humbert, 2020)*



[Go Video: Explanation about Dysphagia](#)

*(CADIS HUESCA, 2021)*

**Difficulty Swallowing**

Ketika seseorang mengeluhkan

[Go Video: Difficulty Swallowing](#)

*(FreeMedEducation, 2018)*

# Dysphagia classification

Dysphagia can be broken down into two main classifications according to the place where they take place: Oropharyngeal dysphagia and Esophageal dysphagia.

## ■ Oropharyngeal dysphagia

Problems occur during one of the first two stages of swallowing. There is a failure at some point in the coordinated swallowing process.



(Source: obtained from Canva Pro)



# Dysphagia classification

## ■ Esophageal dysphagia

Problems occur during the last phase of swallowing. Patients usually describe symptoms of food getting stuck seconds after initiating swallowing and identify it occurring in the upper half of the thorax or slightly lower.

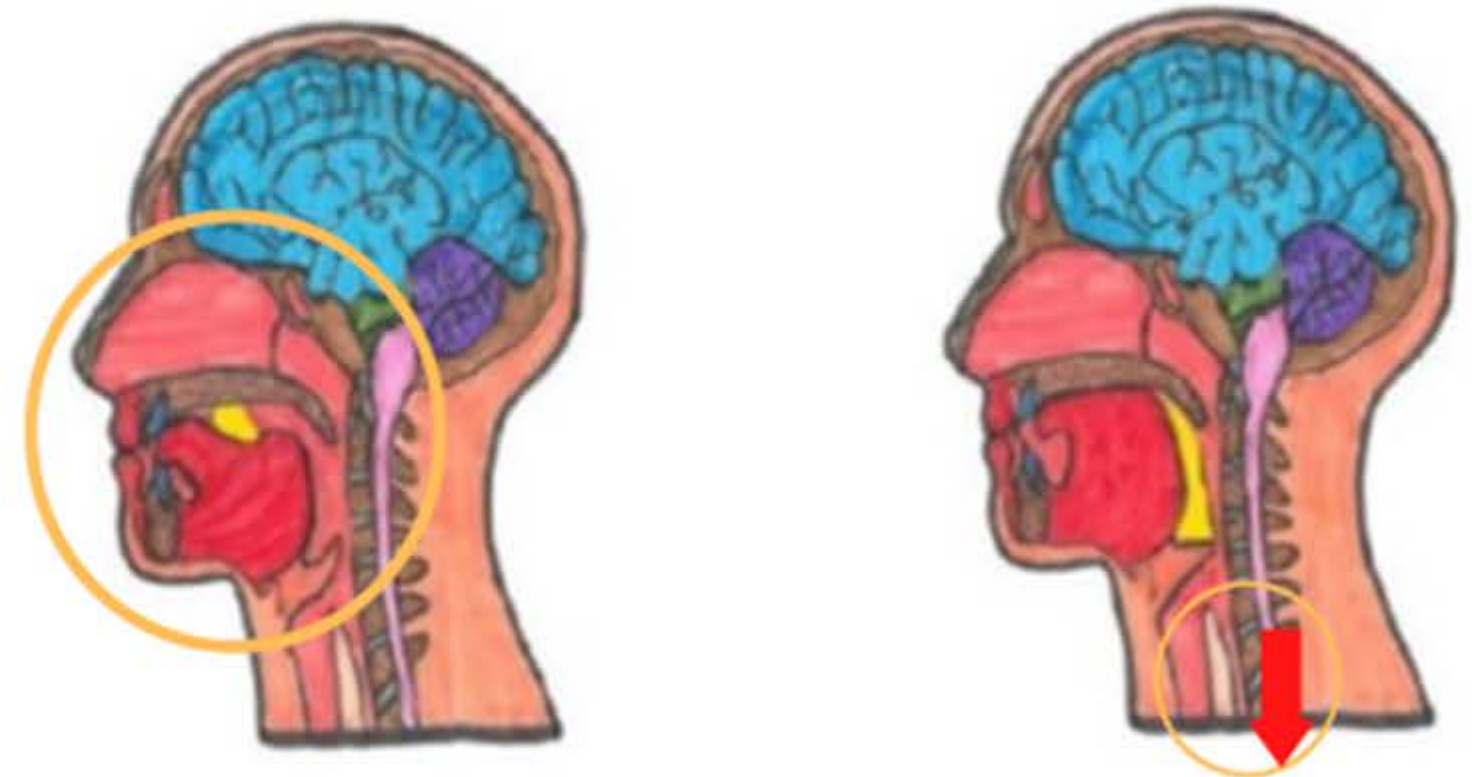


Figure 3. Dysphagia classification (Source: CADIS Huesca)

# Dysphagia Signs

## Most frequent signs and symptoms:

- Difficulty picking up food from the cutlery
- Increased time chewing and oral handle
- Inability to keep the bolus in the oral cavity
- Difficulty performing and coordinating oral movements with the facial, oral and lingual muscles
- Loss of strength during chewing
- Prolonged eating time
- Excessive chewing pattern
- Hesitation or inability to initiate swallow
- Frequent repetitive swallows
- Drooling
- Food residue in the mouth after swallowing
- Pain, discomfort or a feeling of stuck in the throat
- Difficulty when initiating to swallow with or without pain



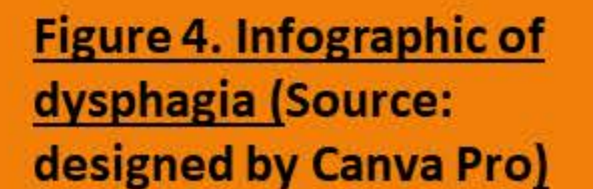
# Dysphagia Signs

- Sweating, watery eyes and discomfort
- Nasal or oral regurgitation
- Changes in tone of voice, hoarseness or "wet voice" or nasal
- Frequent choking
- Airway obstructions
- Feeling of choking when swallowing
- Nausea or vomiting
- Reflux
- Sensation of food getting stuck in the throat or chest, or behind the breastbone.
- Recurrent respiratory infections
- Cough during meals or up to 20 minutes later
- Recurrent fever or low-grade fever
- Color change in the fingers or lips
- Weight loss
- Dehydration





INDEED: "Innovative tools for diets oriented to education and health improvement in dysphagia condition"  
Project N:2020-1-ES01-KA204-083288





## Practical exercise to apply the theory.

**In this exercise we will identify signs of dysphagia in a person during the feeding process.**

**Timetable:** apply during mealtime

**Materials:** food prepared for that meal.

**Steps to follow being aware of the process:**

- 1. Situation.** Sit in a chair next to the person with suspected dysphagia, at the same height but without interfering in the process or making the person uncomfortable.

## Practical exercise to apply the theory.

**2. Observation of the process.** From the moment he/she picks up the spoon from the table, picks up the food with the mouth, chews it, forms the bolus, swallows it and even finally wipes the mouth at the end.

**3. Identification of signs.** Be alert to identify if any sign occurs in any of the steps during feeding.

***Note: if we do not have a person to observe, we can do it with ourselves by eating or remembering a meal with a person we suspected to have dysphagia.***



# Health consequences

The consequences of dysphagia range from compromised general health to more serious problems such as malnutrition, dehydration, choking, obstruction, aspiration pneumonia and even death.



**Security complication**



**Efficacy complication**



**Oral care**



# Health consequences

## ■ Security complication

- **Choke**

It is the sensation that food is stuck in your throat or chest and it partially prevent air from getting into lungs. It persist breath and start the coughing to eliminate this estrange particle.

### ***How is an airway choke treated?***

It is advisable to encourage the person to cough until the element is expelled. It should be avoid drink liquids, eat food or back blows because the foreign object could be fall into airway.



# Health consequences

## ■ Security complication

- **Obstruction**

An airway obstruction is a blockage in any part of the airway due to a food or foreign object. An obstruction may totally prevent air from getting into lungs that It would be life threatening emergencies that require immediate medical attention.

### ***How is an airway obstruction treated?***

Call national health emergency phone number and start with The Heimlich maneuver. This is an emergency technique that may help a person who is choking on a foreign object



[Go Video: The Heimlich maneuver](#) ( Howcast, 2012)



Figure 5. The Heimlich maneuver (Source: CADIS Huesca)



# Health consequences

## ■ Security complication

- **Respiratory infections**

Respiratory tract infections (RTIs) are infections of parts of the body involved in breathing, such as the sinuses, throat, airways or lungs. Respiratory infections as pneumonia need obligatory treatment.

People with dysphagia commonly develop aspiration pneumonias. This occurs when food, saliva, liquids or vomit is ingressed into the lungs or airways leading to the lungs, instead of being swallowed into the esophagus and stomach. All of these things may carry bacteria that affect lungs. The 52% of patients with dysphagia suffer from aspiration.

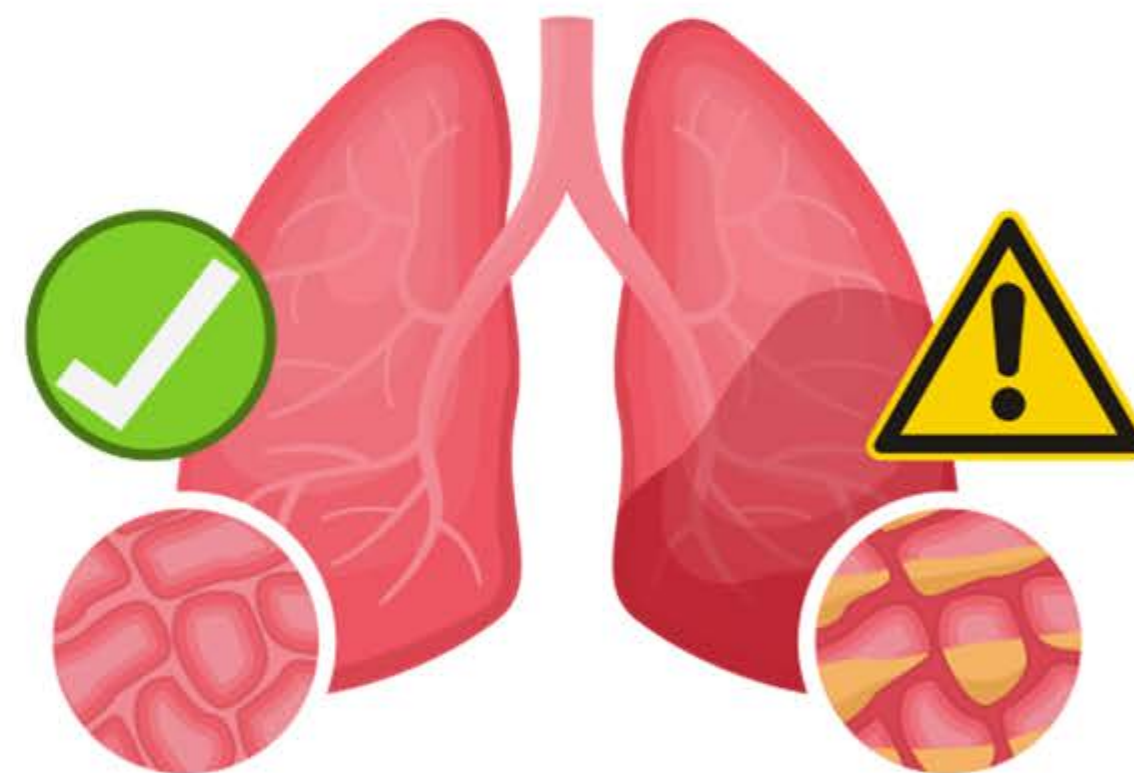


Figure 6. Aspiration pneumonia  
(Source: designed by Canva Pro)



# Health consequences

## ■ Efficacy complication

- **Risk for malnutrition**

Malnutrition is an imbalance of energy or other nutrients (lack of carbohydrates, fats, vitamins and minerals) that causes measurable negative effects on body composition, physical function and clinical outcomes.

The 51% of people with dysphagia are at risk of malnutrition and severity of dysphagia correlates with increase incidence of malnutrition.

# Health consequences

## ■ Efficacy complication

- **Risk of dehydration**

Dehydration occurs when you do not take in enough fluids, use or lose more fluids than you take in, and your body does not have enough water and other fluids to function normally.

Their consumption is lower due to dislike of this texture or lack of desire to make it, which increases the risk of dehydration.

Dehydration may lead to lethargy, mental confusion, and increased aspiration.



(Source: obtained by Canva Pro)



# Health consequences

## ■ Efficacy complication

- **Decrease the quality of life**

Quality of life may be defined as the degree to which an individual is healthy, comfortable and able to participate in or enjoy life events.

Previous main complications associated with dysphagia may lead to decreased quality of life and social isolation, as well as increased risk of comorbidities and mortality.

All this leads to an increase in dependency, a greater burden of personal and medical care, as well as an increase in institutionalization.

# Infographic of health consequences

Infographics available for download on the training platform (<https://indeed-project.org/>).



**Figure 7. Infographic of health consequences**  
(Source: designed by Canva Pro)



# Detection and diagnosis



# Detection and diagnosis

## ■ Detection

Signs detection is an essential part of the treatment of dysphagia people. When dysphagia is underestimated, unrecognized (so-called silent dysphagia) or left untreated, they may lead to previous risks mentioned.

For this reason, training elderly or most vulnerable people in dysphagia and other swallowing complications is essential to carry out a correct treatment.

Training to detect dysphagia signs, you should follow next steps:

**1. Keep a close eye on**

**2. Get informed**

**3. Detect:**

**4. Act**



# Detection and diagnosis

## Four steps:

1. **Keep a close eye on:** Control your state of health: weight variations, fatigue, food rejection, swallowing difficulty and other problems. They may indicate a health problem
2. **Get informed:** request information from the health professionals of your health centre or disability association.
3. **Detect:** Identify the usual signs of dysphagia and how often they appear.
4. **Act:** Inform the reference health professional. Follow the specialist's instructions regarding posture, diet and other relevant habits

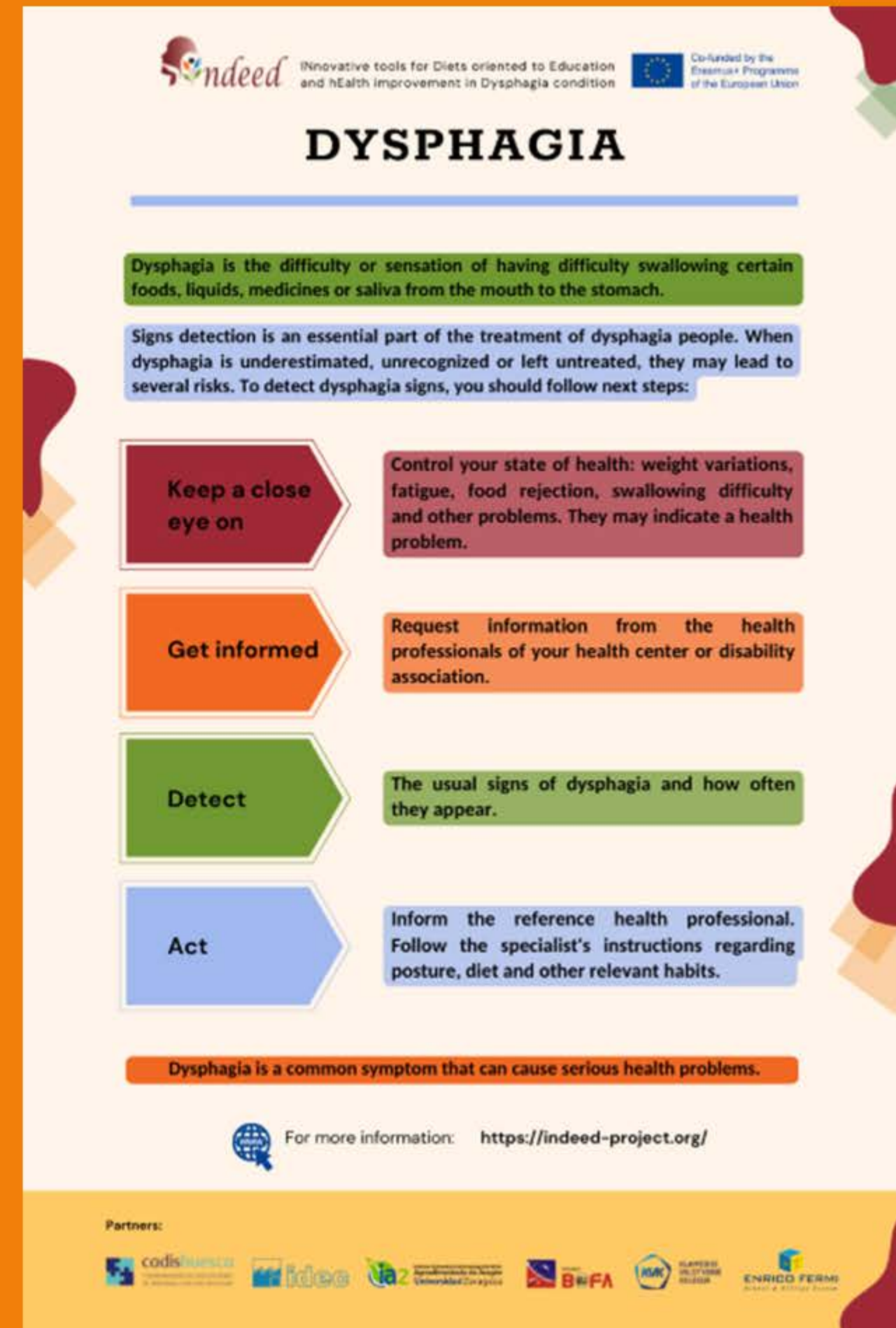


(Source: obtained from Canva Pro)



# Infographic on the importance of dysphagia detection

Infographics available for download on the training platform (<https://indeed-project.org/>) .



**Figure 8. Infographic on the importance of dysphagia detection (Source: designed by Canva Pro)**



# Detection and diagnosis

## ■ Diagnosis

Your doctor can carry out an initial assessment of your swallowing and a physical examination and then refer you for further tests and questions such as:

- how long you've had signs of dysphagia.
- whether your symptoms come and go or are getting worse.
- whether dysphagia has affected your ability to swallow solids, liquids or both.
- whether you've lost weight.



(Source: obtained by Canva Pro)



# Detection and diagnosis

## ■ Treatment and Professionals involved

The goals of dysphagia treatment are to reduce the complications mentioned above. Therefore, a proper diagnosis is essential for a correct treatment and this should be performed by a multidisciplinary team that includes:

Dentist, Gastroenterologist, Neurologist, Nursing,  
Nutritionist/Dietician, Occupational Therapist, Physical Therapist,  
Social Worker, Speech-Language Pathologist and others.



(Sources: obtained by Canva Pro)



# Alert protocol

When signs of dysphagia are detected, it is important to start with the alert protocol. The steps of this protocol will depend on whether you belong to a centre or association of people with disabilities that has a health area or not.

- **Yes, I belong to a center with a health area.** If you detect the repeated presence of suspicious signs of dysphagia, you should inform the health professionals of your center.
- **No, I do not belong to a center with a health area.** If you detect the repeated presence of suspicious signs of dysphagia you should go to your nearest health center and inform your family doctor.

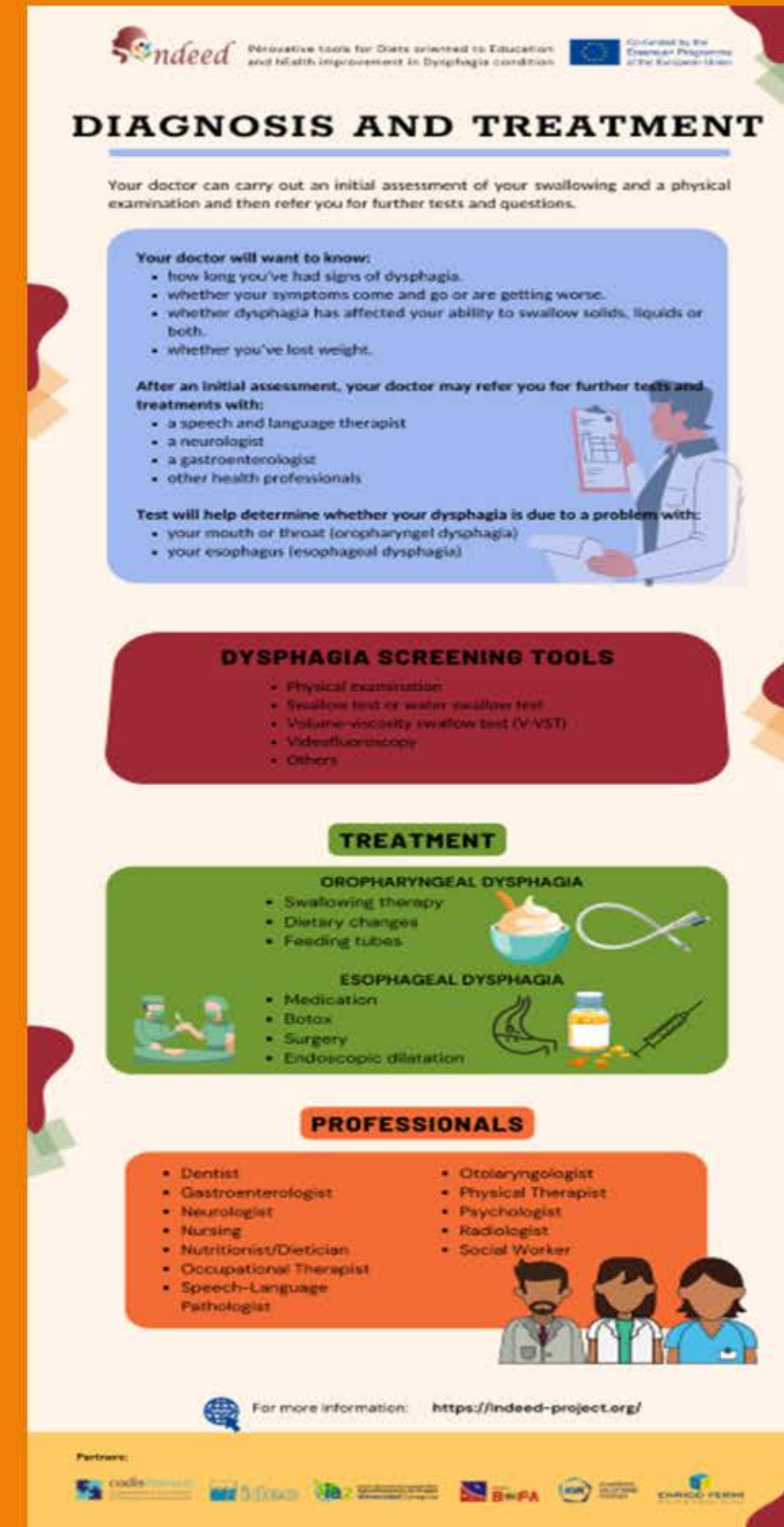


(Source: obtained by Canva Pro)



# Infographic on the diagnosis and treatment

Infographics available for download on the training platform (<https://indeed-project.org/>) .



**Figure 9. Infographic on the diagnosis and treatment**  
(Source: designed by Canva Pro)



# Resources

<https://www.kenhub.com/en/library/anatomy/stages-of-swallowing>

<https://www.kenhub.com/en/library/anatomy/stages-of-swallowing>

<https://nrgi.org/EDUCATION/DYSPHAGIA>

Sura, I., madhavan, a., carnaby, g., & crary, m. A. (2012). Dysphagia in the elderly: management and nutritional considerations. *Clinical interventions in aging*, 7, 287.

<https://www.kenhub.com/en/library/anatomy/stages-of-swallowing>

<https://www.cancertherapyadvisor.com/home/decision-support-in-medicine/hospital-medicine/dysphagia-and-odynophagia/>

Dysphagia video fluoroscopy: lanessa Humbert. 8th May, 2020. Normal vs Abnormal swallowing [Video file]. <https://www.youtube.com/watch?v=fqG0QmlaFMs>

Explanation about Dysphagia: CADIS HUESCA. 14th May, 2021. What is dysphagia? Erasmus+ project INDEED about Dysphagia condition (eng) [Video file].

<https://www.youtube.com/watch?v=BOoURLSbNF0>

Difficulty Swallowing: FreeMedEducation. 17th May, 2018. What is Dysphagia (Difficulty Swallowing)? [Video file]. <https://www.youtube.com/watch?v=KNYgbN9SIfk>

<https://www.cancertherapyadvisor.com/home/decision-support-in-medicine/hospital-medicine/dysphagia-and-odynophagia/>

Teasell r et al. Dysphagia and aspiration following stroke. *Ebrsr*. March 2018 <https://www.healthline.com/health/pneumonia#symptoms>

<https://www.healthline.com/health/airway-obstruction>

The Heimlich maneuver video: Howcast. 21<sup>st</sup> September, 2012. How to Give the Heimlich Maneuver | First Aid Training [Video file]. <https://www.youtube.com/watch?v=7CgtlgSyAiU>

Epinephrine treat video: NationwideChildrens. 23th November, 2011. How To Use an EpiPen [Video file]. <https://www.youtube.com/watch?v=EN83hen4D-Y>

Speyer r., baijens l., heijnen m., zwijnenberg i. Effects of therapy in oropharyngeal dysphagia by speech and language therapists: a systematic review. *Dysphagia*. 2010;25(1):40–65.  
Doi: 10.1007/s00455-009-9239-7

<https://www.malnutritionpathway.co.uk/dysphagia.pdf>

<https://www.ncbi.nlm.nih.gov/pmc/articles/PMC6302767/>

<https://www.asha.org/practice-portal/clinical-topics/pediatric-dysphagia/dysphagia-teams/>



## Complete this table for each activity



The activity takes 2 hours.



The goal of this activity is to learn about swallowing and dysphagia



This module involves basic knowns about swallowing and dysphagia



We need a digital device to do this activity.



Online activity.



# Time for discussion

*Any questions?*

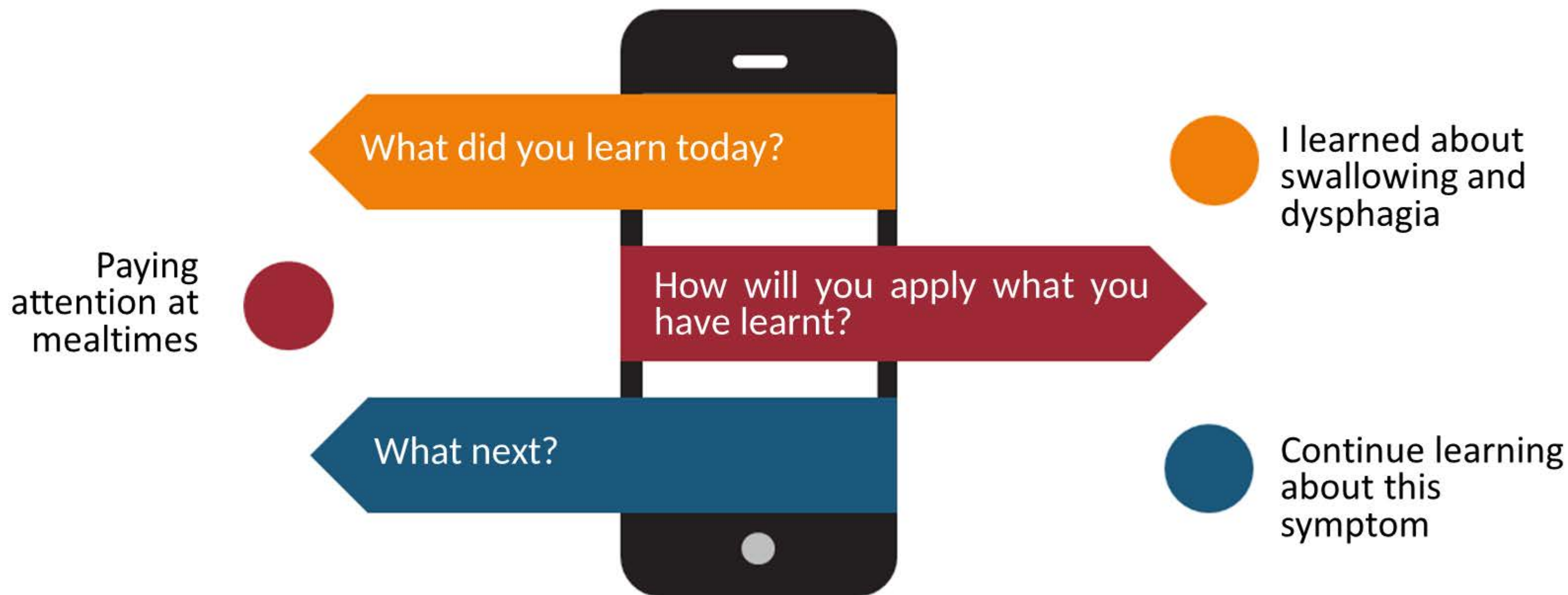


# Review





# Reflect on the session



# Feedback



How many stars  
would you give this  
workshop?  
(1 to 5)?



What reasonable  
change would you  
recommend?



What did you  
like the MOST?



What did you  
like the  
LEAST?





## Indeed partners



<https://indeed-project.org/>

